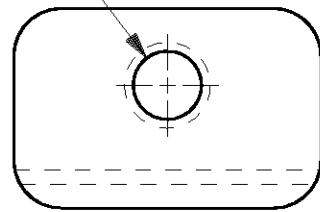


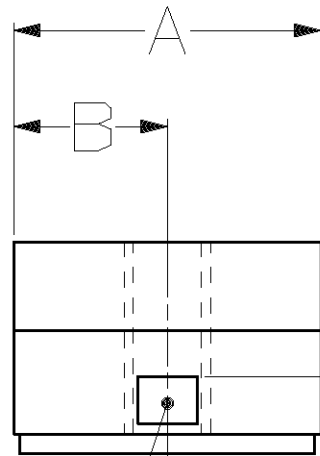
THIS DRAWING IS UNPUBLISHED. RELEASED FOR PUBLICATION, 19 .
 © COPYRIGHT 19 BY AMP INCORPORATED. ALL INTERNATIONAL RIGHTS RESERVED.

LOC	DIST	P	F	REVISIONS				
				ZONE	LTR	DESCRIPTION	DATE	APPD
GP	00				E	REV PER 0U1D-0274-00	11/05/01	JR

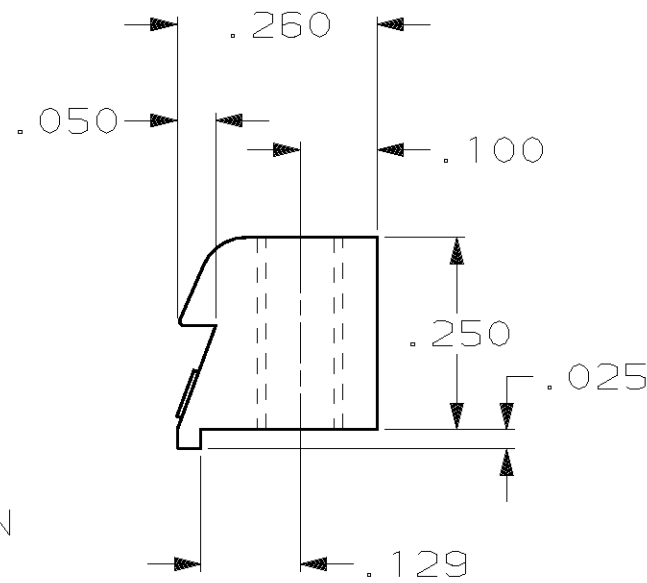
THREAD
SEE TABLE



LATCHING BLOCK
QTY: 2
MATL: ZINC ALLOY



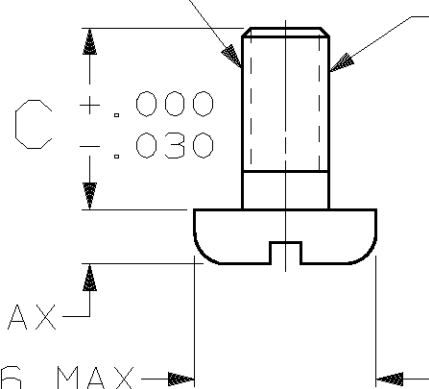
.115
.060 REF



1. PARTS PACKAGED UNASSEMBLED.
2. PARTS PACKAGED AS A UNIT KIT.
3. PACKAGED 50 UNIT KITS PER PACKAGE.
4. OBSOLETE PART NUMBER.

THREAD
SEE TABLE

THREAD IDENTIFICATION
LOCATED IN THIS AREA



PAN HEAD SCREW
QTY: 2
MATL: COLD ROLLED STEEL
PER ASTM A108
FINISH: ZINC PLATED PER ASTM
B633, TYPE III, CLASS
SC1, CLEAR CHROMATE

3	M3X0.5	.236	.200	.400	1 THRU 4	4	745007-7
2	#4-40	.188	.265	.530	5	4	745007-6
2	#4-40	.188	.200	.400	1 THRU 4		745007-5
2	M3X0.5	.177	.265	.530	5	4	745007-4
2	M3X0.5	.177	.200	.400	1 THRU 4	4	745007-3
2	M3X0.5	.236	.265	.530	5	4	745007-2
2	M3X0.5	.236	.200	.400	1 THRU 4		745007-1
PACKAGING	THREAD SIZE	C	B	A	SIZE		PART NO

DO NOT SCALE PRINT. UNLESS SPECIFIED DIMENSIONS IN INCHES TOLERANCES ON: 2 PLC DEC ± - 3 PLC DEC ± .010 ANGLES ± -	DR 5-20-88 C RICHARD	AMP INCORPORATED Harrisburg, Pa. 17105	
	CHK 5-20-88 S WELDON		
MATERIAL SEE CALLOUTS	APPD 5-23-88 V KUMAR	NAME KIT, LATCHING BLOCK, R5 449 TYPE, WITH SCREWS, AMPLIMITE®	
	APPD 5-20-88 R WHYNE	SIZE B	FSCM NO 00779
FINISH SEE CALLOUTS	PRODUCT SPEC -	DRAWING NO 745007	SCALE 4:1
	APPLICATION SPEC -	WEIGHT -	SHEET 1 OF 1